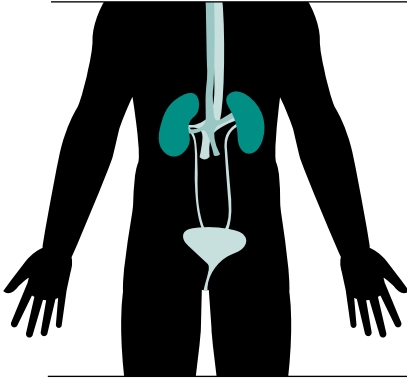


WHAT IS RENAL CELL CARCINOMA?



RENAL CELL CARCINOMA (RCC) is the most common type of kidney cancer.¹ In 2017, it is estimated that nearly **64,000** new cases will be diagnosed and approximately **14,400** people will die from RCC in the United States.²

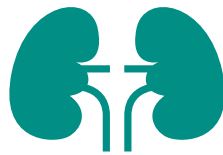
HOW COMMON IS RCC?

It is the **6th most common** cancer in men

and the **10th most common** in women.²

RCC accounts for **4%** of all new cancer cases in the U.S.³

QUICK FACTS⁴

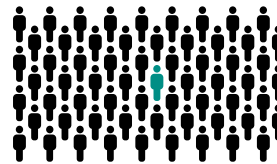


9 out of 10

cases of kidney cancers are RCC

1 in 63

people will develop kidney cancer in his or her lifetime



The average age at diagnosis is

64

WHAT ARE THE TREATMENT OPTIONS?⁵

Five types of treatment are typically used in patients with RCC:



SURGERY



RADIATION THERAPY



BIOLOGIC THERAPY
(including immunotherapy)



TARGETED THERAPY



CHEMOTHERAPY

WHAT ARE SOME COMMON RISK FACTORS?⁶



SMOKING



GENETICS



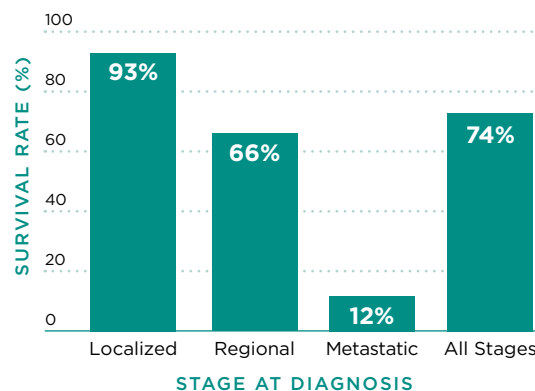
OBSESITY



HIGH BLOOD PRESSURE

WHAT IS THE OUTLOOK?²

Five-year survival rates by stage at diagnosis:



MEDIA CONTACT

Lindsay Treadway

Public Affairs
Exelixis, Inc.

(650) 837-7522

ltreadway@exelixis.com



EXELIXIS[®]

1. National Cancer Institute. Kidney Cancer- Patient Version. (<http://www.cancer.gov/types/kidney>) Accessed December 20, 2016. 2. American Cancer Society. Cancer Facts & Figures 2017. Atlanta: American Cancer Society; 2017. 3. National Cancer Institute. SEER Stat Fact Sheets: Kidney and Renal Pelvis Cancer. (<http://seer.cancer.gov/statfacts/html/kidrp.html>). Accessed December 20, 2016. 4. American Cancer Society. Kidney Cancer (<http://www.cancer.org/acs/groups/cid/documents/webcontent/003107-pdf.pdf>). Accessed December 20, 2016. 5. National Cancer Institute. Renal Cell Cancer Treatment - Patient Version (https://www.cancer.gov/types/kidney/patient/kidney-treatment-pdq#section/_50). Accessed December 20, 2016. 6. National Cancer Institute. Genetics of Kidney Cancer. (<http://www.cancer.gov/types/kidney/hp/kidney-genetics-pdq>). Updated December 2, 2016. Accessed December 20, 2016.